



CINCINNATI
INDUSTRIAL MACHINERY
Manufacturer of Alvey® Washing Equipment

Alvey® SL-2D

PASS THROUGH WASHER

No commercial kitchen facility is complete without an Alvey® washer

The Alvey® Model SL-2D is a 24 pan, double rack pass through washer designed to wash pots, pans, and cooking utensils. The SL-2D features a wash grate tray and automatic hold-down grid for light weight items with rotating stainless steel spray arms above and below the wash chamber.

Features

WASH CHAMBER HOUSING

- 60" wide by 27" deep by 28" high
- Holds up to 24 - 18" X 26" sheet pans per cycle
- Holds up to 2 - 140 quart mixing bowls
- Four revolving stainless steel spray arms with stainless steel nozzles located above and below the wash chamber
- Adjustable nozzles located on bottom of wash chamber for hard to reach places
- Stationary rinse nozzles located above and below wash tray
- Rinse water used to replenish wash medium

WASH PUMP

- 15 HP totally enclosed, fan cooled motor, horizontally mounted pump delivering 240 GPM at 55 PSI
- The wash spray arms are provided with easily removable end caps for maintenance and cleaning
- Removable stainless steel front cover panel for easy maintenance and cleaning
- Stainless steel wash and rinse piping

TANK AND HOUSING

- Constructed of 14 gauge type 304 polished stainless steel
- 55 gallon capacity
- Stainless steel filter screens
- Drain valve with overflow pipe

DOOR

- Vertical opening/stainless steel
- Counter weighted for easy operation
- Door operated safety switch



CONTROL PANEL

- UL listed stainless steel panel
- Programmable cycles for light, medium, and heavy
- Electronic temperature control
- Digital temperature gauges

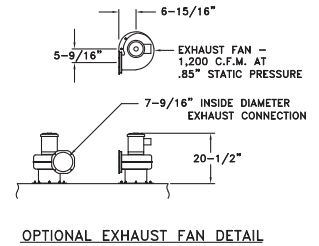
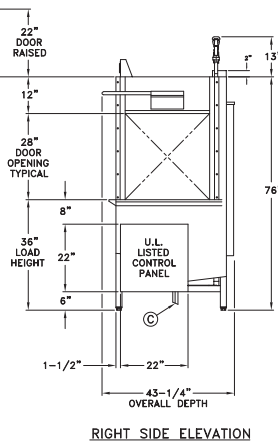
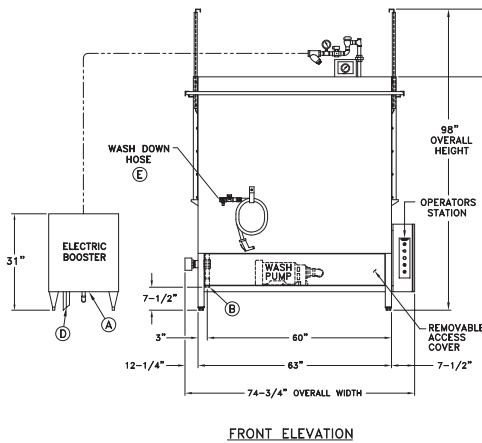
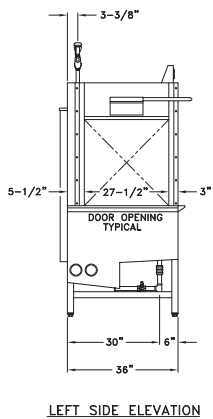
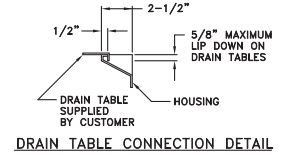
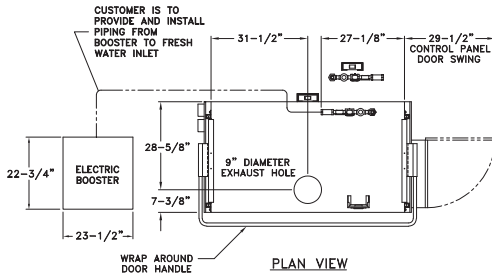
ADDITIONAL FEATURES

- NSF Certified
- Wash and rinse pressure gauges
- Rinse line strainer
- Adjustable sanitary feet
- Wash grate tray
- Automatic hold-down grid for light items



Alvey® SL-2D

Detailed Dimensions



Accessories and optional equipment

- Insulated housing
- Wash down hose and nozzle
- Steam pressure regulator
- Prison package
- Warm rinse heat booster for gas, electric or steam

Heating Options

- Stainless steel steam heated coils
- Electric immersion heaters
- Gas burner (natural or propane)

Voltage Options

- 208V
 - 220/240V
 - 460/480V
- International options available

Optional baskets for Alvey® Model SL-2D

Model #	Description	Products
R01078	Sheet pan/bun rack - (12) pockets	18" x 26" x 1" sheet pans
R01035	Steam table insert rack - (4) pockets	Full size 4" deep inserts
R01042	Cake pan/pie pan rack - (5) pockets	Pan 2 1/2" deep
B18311	Utensil basket with lid 23" x 23" x 6"	Kitchen utensils
B18320	Miscellaneous pan basket 23" x 23" x 10"	Pans 10" deep