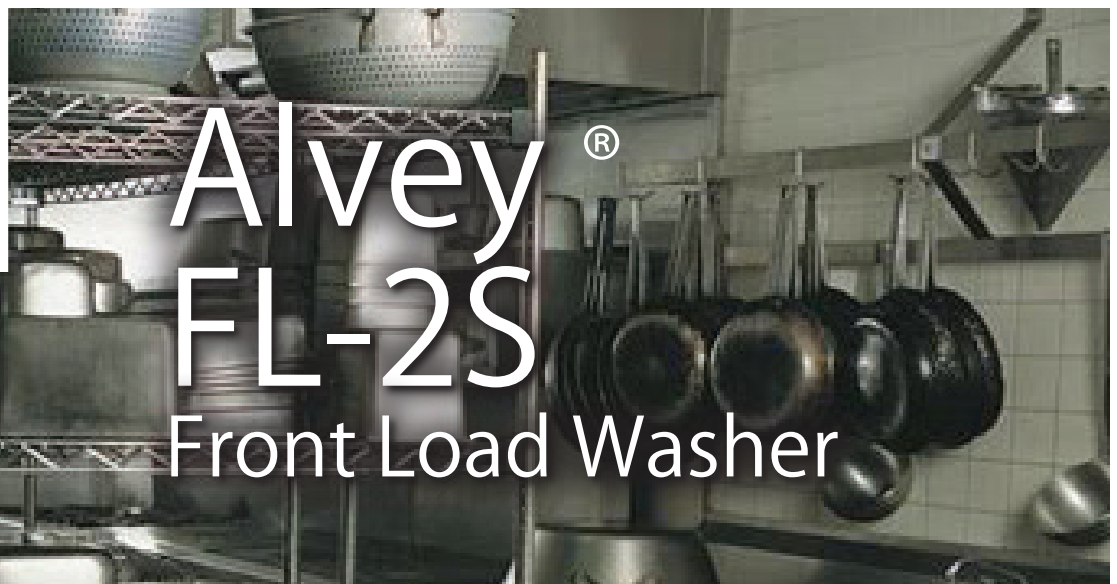




CINCINNATI
INDUSTRIAL MACHINERY
Manufacturer of Alvey® Washing Equipment



Alvey® FL-2S Front Load Washer

No commercial kitchen facility is complete without an Alvey® Equipment washer

The Alvey® Model FL-2S is a front loading ware washer designed to wash pots, pans, and cooking utensils. The FL-2S features a wash grate tray and automatic hold-down grid for light weight items with rotating stainless steel spray arms above and below the wash chamber.

Features

Wash Chamber Housing

- 37 1/2" wide by 30 1/2" deep by 27" high
- Holds up to 16-18" X 26" sheet pans
- Holds up to a 140 qt. mixing bowl
- Revolving stainless steel spray arms with stainless steel nozzles located above and below wash tray
- Adjustable nozzles located on bottom of wash chamber for hard to reach places
- Stationary rinse nozzles located above and below wash tray
- Rinse water used to replenish wash medium

Wash Pump

- 10 HP totally enclosed fan cooled motor, horizontally mounted pump delivering 240 GPM at 55 PSI
- The wash spray arms are provided with easily removable nozzles and end caps for maintenance and cleaning
- Removable stainless steel front cover panel for easy maintenance and cleaning
- Stainless steel wash and rinse piping

Tank and Housing

- Constructed of 12 gauge type 304 polished stainless steel
- 55 gallon capacity
- Stainless steel filter screens

Door

- Vertical opening/stainless steel
- Counter weighted for easy operation
- Door operated safety switch



Control Panel

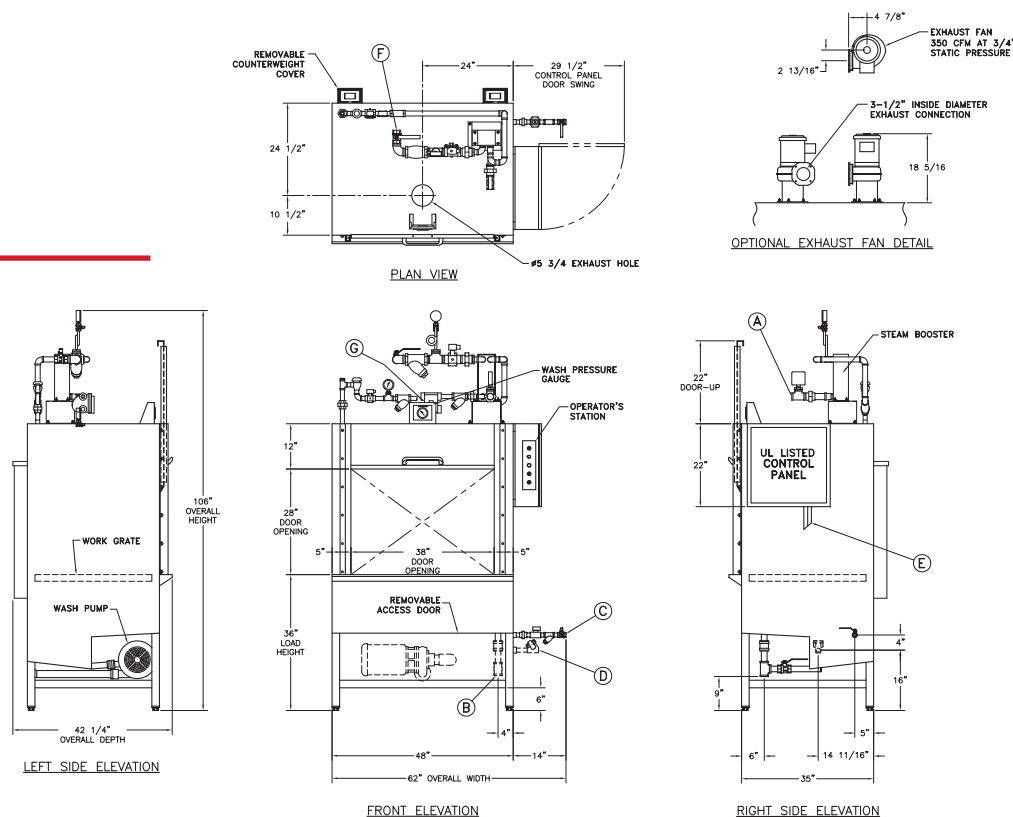
- UL listed stainless steel panel
- Programmable cycles for light, medium and heavy
- Electronic temperature control
- Digital temperature gauges

Additional Features

- NSF Certified
- Wash and rinse pressure gauges
- Rinse line strainer
- Adjustable sanitary feet and wash grate tray
- Automatic hold-down grid for light items



Detailed Dimensions



Accessories and optional equipment

- Insulated housing
- Wash down hose and nozzle
- Warm rinse heat booster for gas, electric or steam

Heating Options

- Stainless steel steam heated coils
- Electric immersion heaters
- Gas burner (natural or propane)

Voltage Options

- 208V
 - 220/240V
 - 460/480V
- International options available

Optional baskets for Alvey® Model FL-2S

Model #	Description	Products
R01055	Sheet pan/bun pan rack - (16) pockets	18" x 26" sheet pans
R01037	Steam table insert rack - (5) pockets	4" deep inserts
R01042	Cake pan/pie pan rack - (5) pockets	Pans 2-1/2" deep
B18311	Utensil basket with lid. 23" x 23" x 6"	Kitchen utensils
B18320	Miscellaneous pan basket. 23" x 23" x 10"	Pans 10" deep

Contact us today

4600 N. Mason-Montgomery Road | Mason, OH 45040
800-677-0076 | Sales@AlveyWashing.com

www.alveywashing.com

