



**ALVEY**

# FL-2S Front Load Washer

**No commercial kitchen facility is complete without an Alvey® Equipment washer**

The Alvey FL-2S washer is a front loading commercial washer designed to wash pots, pans, and cooking utensils. The FL-2S features a wash grate tray and automatic hold-down grid for lightweight items with rotating stainless steel spray arms above and below the wash chamber. This compact washer can hold one 140 quart mixing bowl or 16, 18" X 26" sheet pans per cycle. The Alvey FL-2S washers are built with enduring construction, easy maintenance, operator-friendly, environmentally conscious, and safety in mind.



## Features

- NSF Certified
- Available with steam, electric, or gas heat
- Multiple voltage options are available
- Counterweighted door with safety switch for easy operation
- UL listed stainless steel control panel
- Programmable cycles for light, medium, and heavy wash cycles
- Electronic temperature control
- Rinse water used to replenish wash medium for energy and water efficiency
- Wash chamber housing is 37 1/2" wide by 30 1/2" deep by 27" high
- The washing spray arms are provided with easily removable nozzles and end caps for maintenance and cleaning
- Removable stainless steel front cover panel for easy maintenance and cleaning
- Constructed of 12-gauge type 304 polished stainless steel
- Counterweighted for easy operation
- Door operated safety switch

## Accessories and Optional Equipment

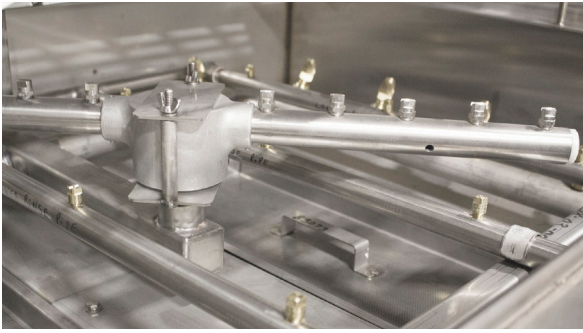
- Insulated housing
- Wash down hose and nozzle
- Warm rinse heat booster for gas, electric or steam

### Heating Options

- Stainless steel steam heated coils
- Electric immersion heaters
- Gas burner (natural or propane)

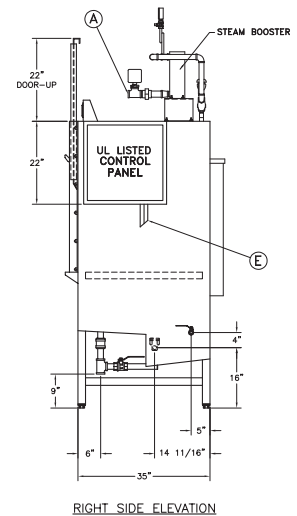
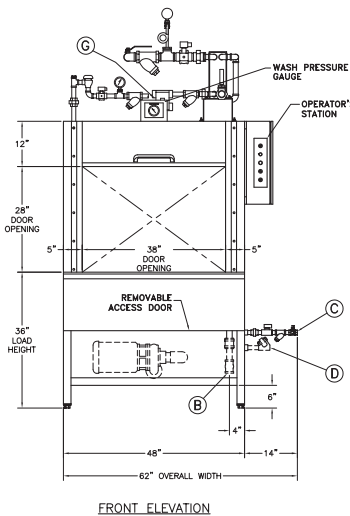
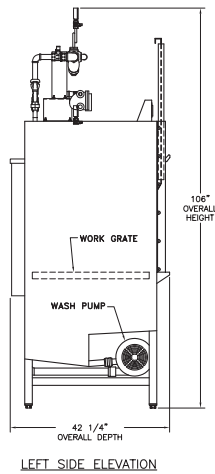
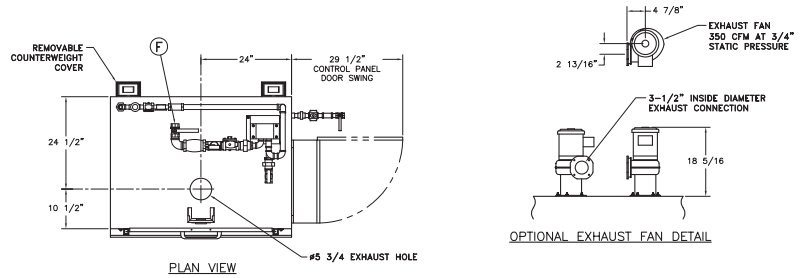
### Voltage Options

- 208V
  - 220/240V
  - 460/480V
- International options available



# FL-2S Front Load Washer

## Detailed Dimensions



## Optional Baskets for Alvey Model FL-2S

Model #	Description	Products
R01055	Sheet pan/bun pan rack - (16) pockets	18" x 26" sheet pans
R01037	Steam table insert rack - (5) pockets	4" deep inserts
R01042	Cake pan/pie pan rack - (5) pockets	Pans 2-1/2" deep
B18311	Utensil basket with lid. 23" x 23" x 6"	Kitchen utensils
B18320	Miscellaneous pan basket. 23" x 23" x 10"	Pans 10" deep



Contact us today  
 4600 N. Mason-Montgomery Road | Mason, OH 45040  
 513-923-5601 | Sales@AlveyWashing.com  
[www.AlveyWashing.com](http://www.AlveyWashing.com)

