



KS-70 Cart & Rack Washer

No commercial kitchen facility is complete without an Alvey® Equipment washer

The Alvey® Model KS-70 is a walk-in cabinet washer designed to clean racks, carts, and delivery cabinets. With the use racks, it is an efficient high-volume pot, pan, and utensil washer. When space is limited and maximum production is needed, the Alvey® model KS-70 is the ideal machine to meet your production rate. This cart washer enables quick configuration changes to maximize efficiency.

Features

Wash Chamber Section

- Wash chamber 56" long by 36" wide, and 80" high
- Constructed of type 304 stainless steel with polished finish
- Panel-Z type interlocking double flange type seal
- Two counter-rotating stainless steel spinning arm assemblies
- Stainless steel wash nozzles
- Stationary fresh water rinse on top and sides with brass nozzles
- Fresh rinse water to replenish wash tank each cycle
- Gas, electric, and steam heat are available

Wash Pump

- 15 HP TEFC (totally enclosed fan cooled) motor, vertically mounted pump delivering 400 GPM at 35 PSI
- Stainless steel wash and rinse pipes
- Pump protection screen

Tank and Housing

- Tank constructed of 12 gauge type 304 stainless steel
- Housing constructed of 16 gauge type 304 stainless steel
- Removable stainless steel filter screens
- 215 gallon tank capacity

Door

- 38" wide by 82" high opening
- Interior safety release latch
- Triple hung (3 hinges) door for added durability



Control Panel

- UL listed type 4X stainless steel panel
- Three pre-set cycle times
- Automatic water fill
- Electronic temperature control
- Digital wash and rinse temperature indicators
- Wash and rinse pressure gauges

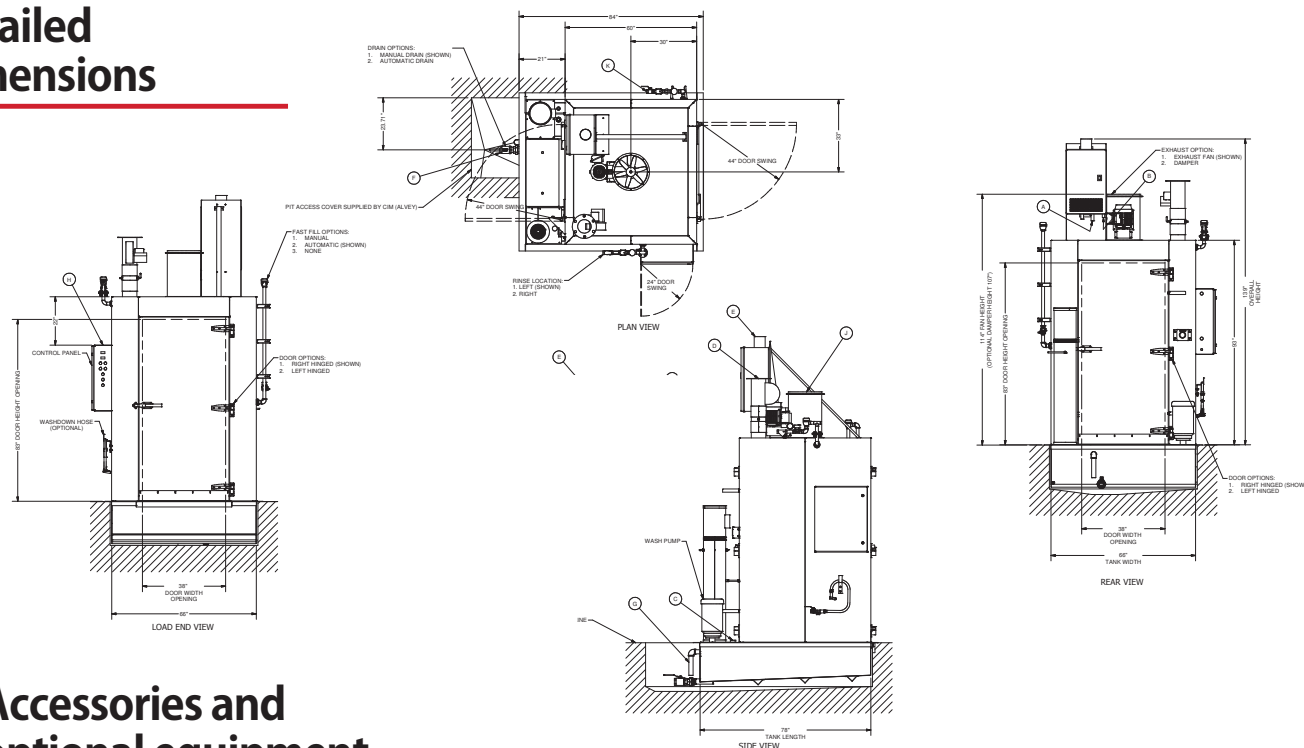
Additional Features

- Floor or pit mountable; floor mounted units come with a ramp for each door
- Safety guard rail
- Anti-slip floor
- Washer shipped fully assembled or knocked down for field assembly



KS-70 Cart & Rack Washer

Detailed Dimensions



Accessories and optional equipment

- Insulated housing
- Over-sized and custom-designed units
- High capacity exhaust fan
- Ramp for floor mounted design
- Warm rinse heat booster for gas, electric, or steam
- Prison package
- Front and rear entry walk-through design

Heating Options

- Stainless steel steam heated coils
- Electric immersion heaters
- Stainless steel gas immersion flue pipe

Voltage Options

- 208V
 - 220/240V/3PH/60HZ
 - 460/480V/3PH/60HZ
- International options available

Optional baskets for Alvey® Model KS-70

| Model # | Description | Products |
|---------|--|---------------------------|
| R01022 | Assorted pan cart (60 3 1/2" x 36" long baskets) | Cake pans, muffin pans |
| R01025 | Asstd pan cart (4) 6 1/2" & (20 8 1/2" x 36" long baskets) | Steam table inserts, pots |
| R01080 | Sheet pan rack holds 48 18" x 26" sheet pans | Bun pans, trays |
| R01024 | Holds buckets and bowls on 3 shelves | Mixing bowls, buckets |
| B18354 | Utensil basket must be used with 6 1/2" basket | Kitchen utensils |



Contact us today
 4600 N. Mason-Montgomery Road | Mason, OH 45040
 513-923-5601 | Sales@AlveyWashing.com
www.AlveyWashing.com

