



Alvey GI-1 & GI-2

Garbage Can Washers

The Alvey® Model GI-1 and GI-2 both wash and sanitize waste receptacles on-site in a fully contained stainless steel cabinet.

No longer is it necessary to devote a separate room for washing waste receptacles. The cabinet design allows the operator to simply place the can into the washing chamber, close the door, and push the 'start' selector switch. The GI series washers do the rest!

- NEMA 4X rated for wash down
- Totally enclosed = no mess, no dedicated room, inside facility usage
- Automatic cycles allow for:
 - Consistent cleaning
 - No wasted time with operator intervention
- Adjustable feet for leveling and stability

Features

Wash Chamber

- Nozzles are designed to wash and rinse both inside and outside of containers
- GI-1 accepts cans up to 36" high x 22" diameter
- GI-2 accepts cans up to 46" high x 32" wide x 38" deep
- Cycles are based on available utilities

Housing

- 14 gauge 304 stainless steel construction
- Adjustable sanitary feet
- Heavy duty stainless steel door
- Removable filter basket

Additional Features

- Fully automatic self contained cleaning
- Safety door limit switch
- Heavy-duty stainless steel construction
- Compact space-saver design
- Steam compatible

Specifications

Fixed Automatic Cycle

- Cold Wash: 45 seconds
- Hot Water Spray or Steam Spray: 30 seconds
- Hot Rinse: 15 seconds

Required Water Flow Rates

- Cold Wash: 21 GPM @ 40 PSIG & Ambient
- Hot Rinse: 21 GPM @ 40 PSIG & 140°F

Required Steam Flow Rate (if used)

- Steam Spray: 125 lbs/hour @ 10 PSIG (saturated steam)

Consumptions Per Pre-Programmed Cycle

- Cold Wash: 15.75 gallons
- Hot Water Spray: 10.5 gallons or Steam Spray: 1.04 lbs.
- Hot Rinse: 5.25 gallons

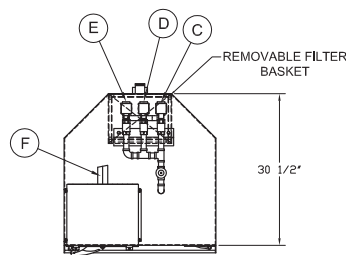
Power Options

120 volts | 1 PH. | 60 HZ | FLA=1
230 volts | 1 PH | 60 Hz | FLA = 1
Others available upon request

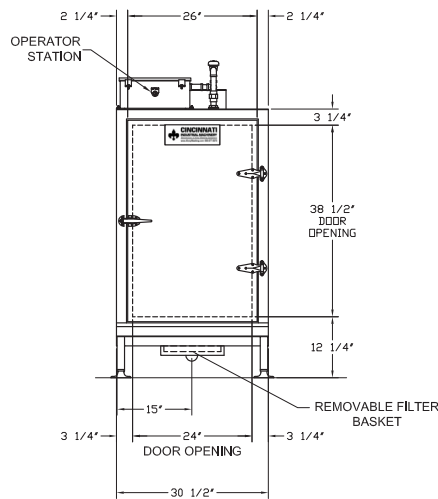


Alvey GI-1 & GI-2

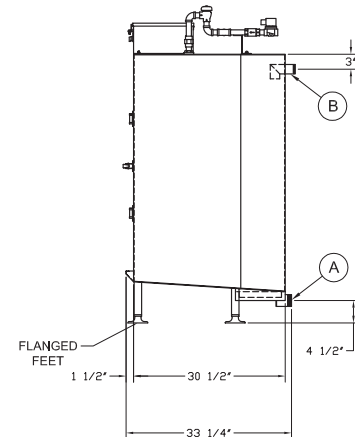
Alvey® GI-1 Detailed Dimensions



PLAN VIEW

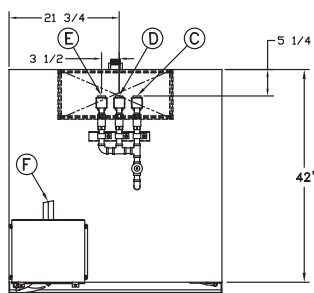


FRONT ELEVATION

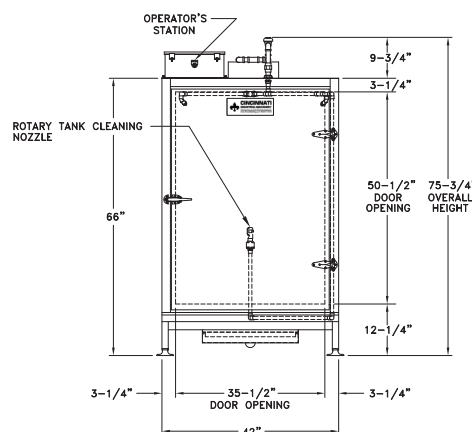


RIGHT SIDE ELEVATION

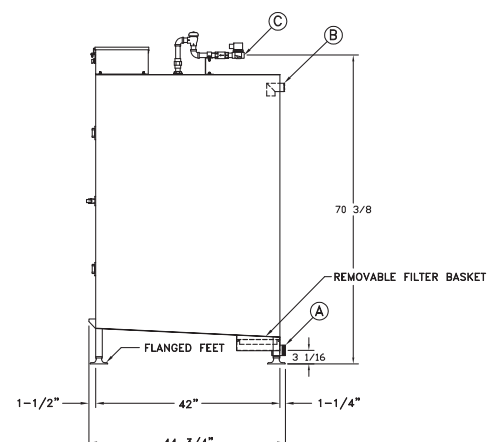
Alvey® GI-2 Detailed Dimensions



PLAN VIEW



FRONT ELEVATION



RIGHT SIDE ELEVATION

Contact us today

4600 N. Mason-Montgomery Road | Mason, OH 45040 | 513-923-5601 | sales@AlveyWashing.com

www.AlveyWashing.com

