



KS-48 Cart & Rack Washer

No commercial kitchen facility is complete without an Alvey® Equipment washer

The Alvey® Model KS-48 is a walk-in cabinet washer designed for high volume washing in a tight space. This stainless steel cabinet washer features roll in convenience for cleaning racks, carts, pots, pans, and utensils. The KS-48 can be floor or pit mounted and optional racks are available.

Features

Wash Chamber Housing

- 43" long by 32" wide by 76" high
- Constructed of type 304 stainless steel with polished finish
- Panel-Z type interlocking double flange type seal
- Holds 48 sheet pans
- Four rotating spray assemblies for complete coverage
- Stainless steel wash nozzles
- Stationary rinse arms with brass nozzles on each side
- Fresh water rinse is used to replenish wash tank each cycle

Wash Pump

- 15 HP TEFC (totally enclosed, fan cooled) motor, vertically mounted pump
- 240 GPM at 55 PSI
- Stainless steel wash and rinse pipes
- Pump protection screen

Tank and Housing

- Constructed of double welded 14 gauge type 304 stainless steel
- 65 gallon tank capacity
- Removable stainless steel filter screens

Door

- 32" wide by 76" high opening
- Constructed of 16 gauge type 304 stainless steel
- Interior safety release latch
- Triple-hung (3 hinges) door for added durability



Control Panel

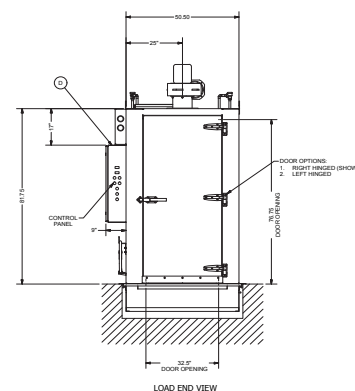
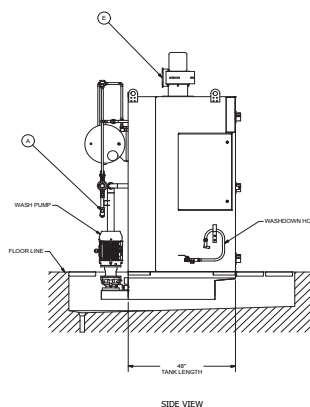
- UL listed type 4X stainless steel panel
- Three pre-set cycle times
- Automatic water fill
- Electronic temperature control
- Digital wash and rinse temperature indicators
- Wash and rinse pressure gauges

Additional Features

- NSF Certified
- Floor or pit mounted; floor units come with a ramp
- Easy access drain
- Safety guard rails
- Anti-slip floor
- High capacity exhaust fan
- Washer shipped fully assembled or knocked down for field assembly
- Wash down hose and nozzle



* Electric heated, pit mounted as shown



- Insulated housing
- Oversized and custom designed units
- Prison Package
- Auto-drain

- Stainless steel steam heated coils
- Electric immersion heaters

- 208V/3PH/60HZ
- 220/240V/3PH/60HZ
- 460/480V/3PH/60HZ

International options available

Model #	Description	Products
R01022	Assorted pan cart (6) 3 1/2" x 36" long baskets	Cake pans, muffin pans
R01025	Asstd pan cart (4) 6 1/2" & (2) 8 1/2" x 36" long baskets	Hotel pans
R01017	Bun pan rack, Holds (36) 2" x 18"x 26" bun pans	Bun pans, muffin tins
R01080	Sheet pan rack holds (48) 1"x 18" x 26" sheet pans	Baking sheets, trays
R01024	Cart holds buckets and bowls on 3 shelves	Mixing bowls, buckets
B18354	Utensil basket must be used with 6 1/2" basket	Kitchen utensils

