



KS-88 Cart & Rack Washer

No commercial kitchen facility is complete without an Alvey® Equipment washer

The Alvey® Model KS-88 is a walk in type stainless steel cabinet washer designed to clean racks, carts, and delivery cabinets. The KS-88 is also an efficient high volume pot, pan, and utensil washer (with use of optional racks). The KS-88 can be modified to meet almost any rack or production rate.

Features

Wash Chamber Section

- Wash chamber 102" long, 36" wide, and 80" high
- Constructed of type 304 stainless steel with polished finish
- Panel-Z type interlocking double flange type seal
- Two counter-rotating stainless steel spinning arm assemblies
- Stainless steel wash nozzles
- Stationary fresh water rinse on top and sides with brass nozzles
- Fresh rinse water to replenish wash tank each cycle
- Gas, electric, and steam heat are available

Wash Pump

- 15 HP TEFC (totally enclosed fan cooled) motor, vertically mounted pump delivering 400 GPM at 35 PSI
- Stainless steel wash and rinse pipes
- Pump protection screen

Tank and Housing

- Tank constructed of 12 gauge type 304 stainless steel
- Housing constructed of 16 gauge type 304 stainless steel
- Removable stainless steel filter screens
- 235 gallon tank capacity. 290 gallon capacity if gas heated.

Door

- 38" wide by 83" high opening
- Interior safety release latch
- Triple hung (3 hinges) door for added durability



Control Panel

- UL listed type 4X stainless steel panel
- Three pre-set cycle times and automatic water fill
- Electronic temperature control
- Digital wash and rinse temperature indicators
- Wash and rinse pressure gauges

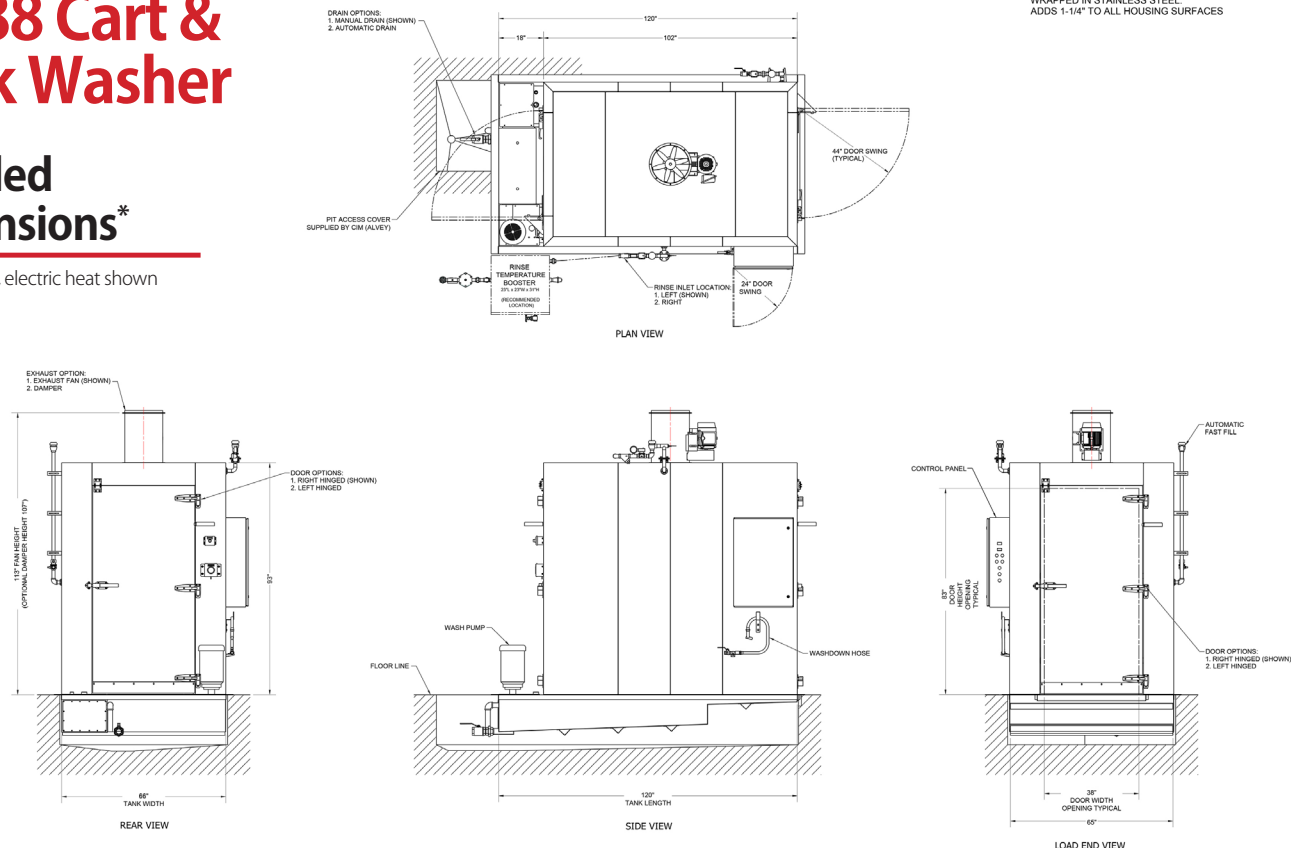
Additional Features

- NSF Certified
- Floor or pit mountable; floor mounted units come with a ramp for each door
- Safety guard rail and anti-slip floor
- Washer shipped knocked down for field assembly
- High capacity exhaust fan
- Wash down hose and nozzle
- Rinse water temperature booster

KS-88 Cart & Rack Washer

Detailed Dimensions*

* Pit mounted, electric heat shown



KS-88 PIT MOUNT, PASS THROUGH, ELECTRIC HEAT

FOR SALES AND ESTIMATING PURPOSES ONLY/NOT FOR CONSTRUCTION



Optional equipment

- Insulated housing
- Over-sized and custom-designed units
- Floor mounted with ramps
- Prison package
- Front and rear entry walk-through design
- Auto-drain

Heating Options

- Stainless steel steam heated coils
- Electric immersion heaters
- Stainless steel gas immersion flue pipe

Voltage Options

- 208V/3PH/60HZ
 - 220/240V/3PH/60HZ
 - 460/480V/3PH/60HZ
- International options available

Optional Accessories for Alvey® Model KS-88

Model #	Description	Products
R01022	Assorted pan cart; (6) 3.5" x 36" long baskets	Cake pans, muffin pans
R01025	Asstd pan cart; (4) 6-1/2" & (2) 8.5" x 36" long baskets	Hotel pans
R01017	Bun pan rack, Holds (36) 2" x 18" x 26" bun pans	Bun pans, muffin tins
R01080	Sheet pan rack; holds (48) 1"x18"x 26" sheet pans	Baking sheets, trays
R01024	Cart holds buckets and bowls on 3 shelves	Mixing bowls, buckets
R18354	Utensil basket; must be used with 6.5" basket	Kitchen utensils
R01031	Assorted pan cart, double (12) 3.5" x 36" long baskets	Cake pans, muffin pans
R01032	Asstd. pan cart, double (8) 6-1/2" & (4) 8.5" x 36" long baskets	Hotel pans
R01016	Sheet pan rack, double Holds (60) 1" x 18" x 26" sheet pans	Baking sheets, trays



Contact us today
 4600 N. Mason-Montgomery Road | Mason, OH 45040
 513-923-5601 | Sales@AlveyWashing.com
www.AlveyWashing.com

